

QUESTION — REWSNA: IT'S ALL ABOUT PERSPECTIVE

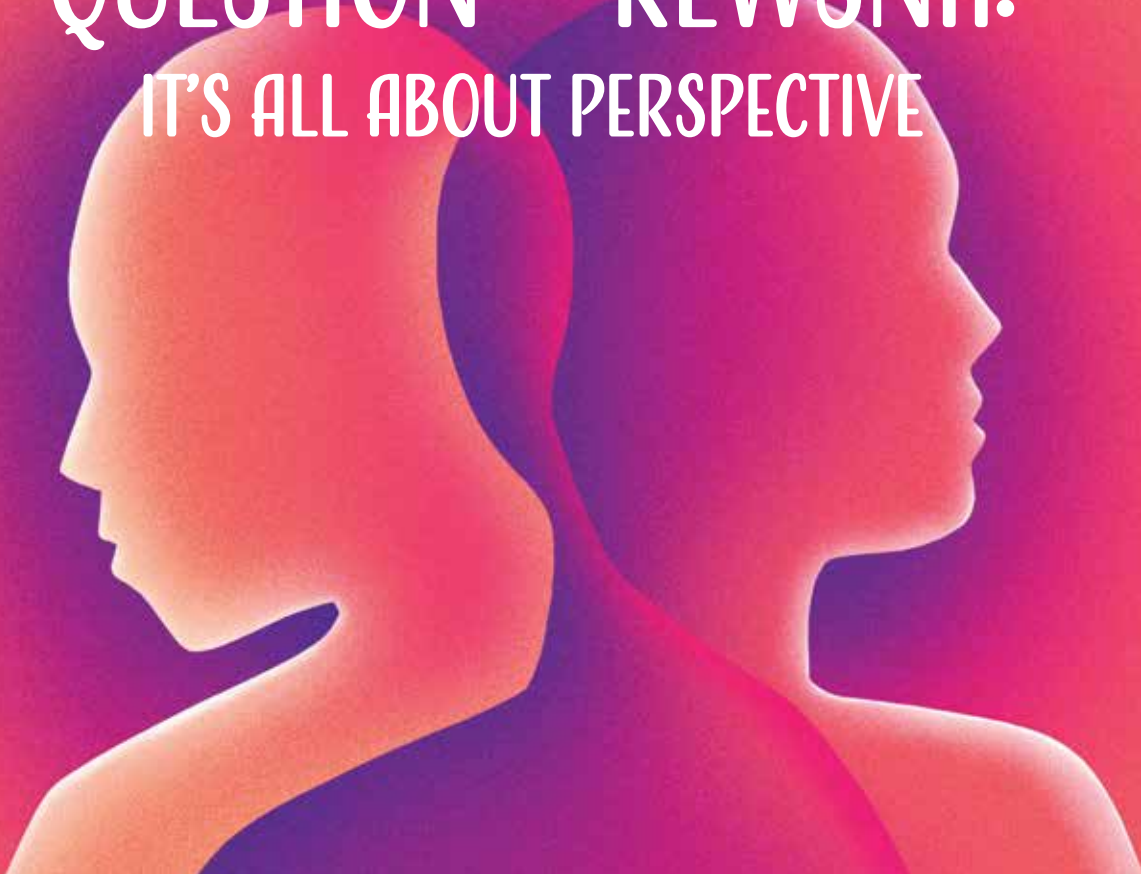


Illustration by Eleeza Palmer

I have lost my passion!
And I do not believe that
I made the right decision
As I very well know with all my heart that
Medicine is not for me
Why would I ever think that
I have exactly what it takes
To be a physician
What I need
Passion, compassion, devotion

I have no more
There will never be a day when
I wake up with zest
With the thought of taking care of my patient
Why...Is it worth it? I ask myself
Medical training brought
The pressure, the fatigue, the insecurity
This is the question I ask everyday
Is this where I want to end up?

—Kavya Puchhalapalli, MD

Editor's note: This poem is written to have the lines read from beginning to end, then last line to beginning.